

# Refrigerator

Side by Side

# HITACHI



# Vacuum-sealed for Food Freshness

(Grande & 3 Door Deluxe Series)

## Vacuum-sealed for Food Freshness

The secret to longer-lasting freshness is reduced oxygen levels. Hitachi's original vacuum preservation extracts air to maintain approx. 0.8 atm (atmospheric pressure). The meat, fish and dairy products are kept fresh and nutritious, and ready to cook without defrosting.



## Refreshing Technology Maintains 0.8 atm Vacuum\*6

Hitachi innovation at its finest and most consistent: the sealed pressure-resistant vacuum realises and maintains the vacuumed environment. A vacuum pump extracts air and reduces oxygen to achieve approx. 0.8 atm (atmospheric pressure) throughout usage.



\*Image of 3 Door Deluxe Series.

## Nutrition Retention

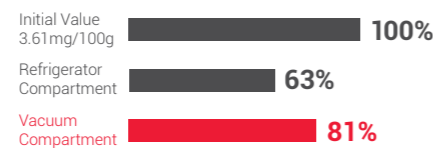
Stay healthy. A vacuumed environment prevents oxidation and retains nutrients inside the food.



### DHA Value in Mackerel Stored after 3 Days\*1 & \*2



### Vitamin C Value in Pineapples Stored after 3 Days\*2 & \*3



### Vitamin C Value in Papaya Stored after 7 Days\*3 & \*4



## Quick Seasoning

Quick seasoning is made possible because the compartment removes air from stored food, enabling seasoning to be absorbed at a faster rate. So, with less time required for seasoning and cooking, such as for marinated seasoning or dehydrating the dried items, there's more time for eating!



### Penetration Rate of the Seasoning\*5



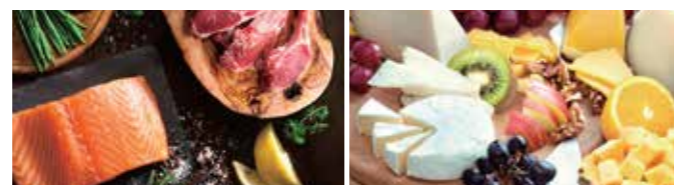
## Optimum Preservation

Preserves your favourite food in their optimal conditions.



## A Tale of 2 Temperature Zones\*10

Now, you can truly chill. Store your food without freezing by selecting a suitable temperature for the stored items, and help prevent deterioration of flavours and texture.

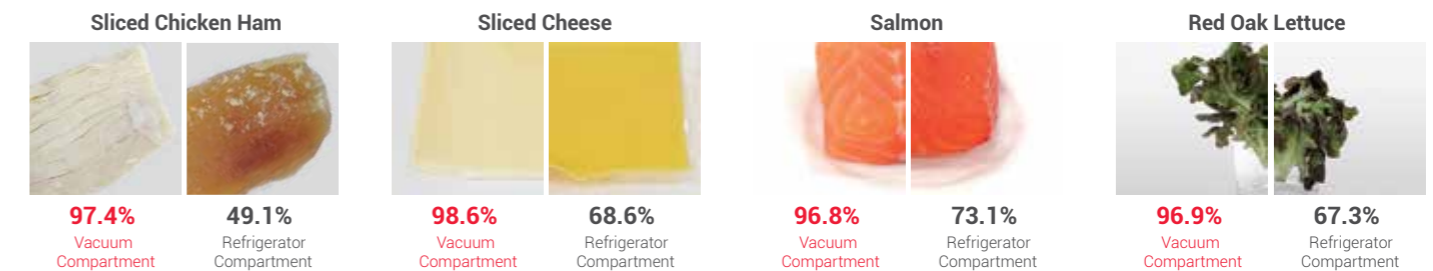


Vacuum Sub Zero Mode Approx. -1°C    Vacuum Chilled Mode Approx. 1°C

## Freshness Preservation

Excellent preservation of original flavour and texture, by keeping them fresh without getting frozen, and hydrated without the need for troublesome wrapping.\*7

### Moisture Retention Level



## Enjoy Fresh Raw Food (Sashimi)!\*10



### K-Value in Raw Tuna Stored after 3 Days\*8

**Vacuum Compartment : 18.8%**  
(Vacuum Sub Zero Mode: Approx. -1°C)  
Refrigerator Compartment : 31.5%  
Initial Value : 10.4%

## Enjoy Fresh Food!\*10

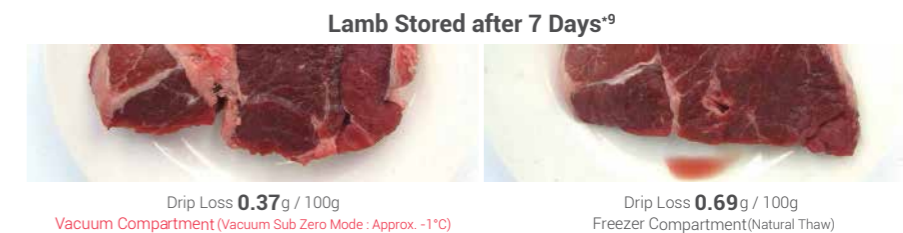


### K-Value in Chicken Breast after 7 Days\*8

**Vacuum Compartment : 46.9%**  
(Vacuum Sub Zero Mode: Approx. -1°C)  
Refrigerator Compartment : 52.3%  
Initial Value : 44.0%

## Flavour Preservation\*10

Excellent preservation of original flavour and texture, by minimising the drips while keeping them fresh without getting frozen and hydrated without the need for troublesome wrapping.



\*1 Tested Model : R-X7300F. The effect may differ depending on types or freshness of food stored. This effect does not extend to best-before and expiration dates, and does not guarantee the indicated shelf life.  
 \*2 Tested by The Center for Scientific and Technological Equipment, Suranaree University of Technology under the rules, conditions and test results at the time of testing and analysis. Graph data calculated by Hitachi.  
 \*3 Tested by Hitachi.  
 \*4 Tested Model : R-M80VAGGD9X. The effect may differ depending on types or freshness of food stored. This effect does not extend to best-before and expiration dates, and does not guarantee the indicated shelf life.  
 \*5 Tested by Hitachi. Tested Model : R-S38JV. The effect may differ depending on types or freshness of food stored.  
 \*6 Vacuum means the space where the pressure is lower than the atmospheric pressure. The pressure in the Vacuum Compartment is about 0.8 atm, which is lower than the atmospheric pressure, hence, Hitachi considers this a vacuum.  
 \*7 Tested model (Sliced Chicken Ham) : R-WB640VFX. Tested model (Sliced Cheese, Salmon & Red Oak Lettuce) : R-S38JV.  
 \*8 Tested by Hitachi. Tested Model : R-WB64VGD0. K-value is an indication of freshness. The lower the value, the fresher the item. K-value of 20% or higher is not suitable for eating raw and consumption. The effect may differ depending on types or freshness of food stored, and does not extend to best-before and expiration dates.  
 \*9 Tested by Hitachi. Tested Model : R-WB64VGD0. The effect may differ depending on types or freshness of food stored, and does not extend to best-before and expiration dates.  
 \*10 For 3 Door Deluxe Series.

# Designed for Convenience

## Auto Door (Grande Series)

Even when your hands are full, or the door is fully packed and heavy, there are two ways to open it up for you with a single touch.



## Touch Open

Open each door with a single touch.



## Slide Open

Touch the open button and slide, the door whose open button was touched first will open and the other door follows.



- The open button cannot be operated through clothes.
- This function enables the door to be only partly opened to help reduce the burden of opening it. The angle that the doors open depends on the placement of the refrigerator.
- The auto door function can be turned off to have the doors operate manually.
- The auto door function of refrigerator does not operate when the vegetable compartment door is open.

# Breakthrough Energy Saving Technology

## Eco Monitoring Sensor (Grande Series)

The controller is displayed automatically only when someone approaches it. It senses if a person is near the refrigerator and automatically switches on/off the energy saving mode. This is useful when you travel or leave your home for an extended period.



## VIP - Vacuum Insulation Panel Technology

VIP is a thin panel with a very fine glass fibre vacuum inside, giving an extremely high heat insulation performance - much higher than that of Urethane, a conventional insulation material. It prevents external heat from escaping to achieve exceptional energy savings. Cooling retention is 15 hours, with the highest heat insulation performance during power cut.



## INVERTER × Dual Fan Cooling

Provides optimum cooling in both the freezer and refrigerator compartments, something a single fan can't do. Improved Dual Fan Cooling with dedicated fans for each compartment ensures energy saving and powerful cooling. This is supported by the Eco Thermo-Sensor in each compartment that detects any temperature change separately to enable the ideal temperature change to be maintained in each of the compartments at all times.



\*Image of Grande Series.

## Energy Saving

Controlling how much and to which compartment chilled air is delivered, it assures no wasted energy thus helping it acquire energy saving ratings.



## Powerful Cooling

Even if the ambient temperature reaches as high as 60°C, every corner inside the refrigerator is still thoroughly cooled.

Cools even at  
**60°C**

Tested by Hitachi.

## Stabiliser Free

Even without a special stabiliser, Hitachi's inverter refrigerator can operate under wide voltage fluctuations. Tested by Hitachi.

Cools under wide  
voltage fluctuations  
**130V-300V**

## Long Cool Keeper

The temperature in the freezer compartment is maintained to keep food fresh in the event of a power cut.

Cooling Retention  
**15 Hours**  
Even during power cut

Tested by Hitachi.

# Fresh Vegetables


## Moisture Guard Vegetable Compartment (Deluxe Series)

For long-lasting freshness, moisture guard compartment maintains the moisture of the food at the optimum level of approx. 90%<sup>\*1</sup> with indirect cooling. And the completely separate compartments are always full of clean air with no transferred odours thanks to the Triple Power Filter.

**Moisture Retention 90%<sup>\*1</sup>**

The moisture guard keeps the stored vegetables at the optimal environment for 7 days<sup>\*1</sup>

**Kale Stored after 7 Days**




# Clean Water from Bottle Water

## Tank Type Ice & Water Dispenser (Grande & Deluxe Series)

Just pour mineral or other purified water into the water tank. To serve you an iced water and ice automatically made for you. No trouble some plumbing is required, and you can install the unit virtually anywhere.



\*Image of 3 Door Deluxe Series.



\*Image of Deluxe Series.

## Clean Ice Automatically Made for You (Grande & Deluxe Series)

When you want to make ice quickly, switch the Quick Freezing mode ON. This will make ice approx. 14%<sup>\*2</sup> faster.



# Powerful Deodorisation

## Triple Power Filter

Triple Power Filter removes odour components<sup>\*3</sup> and removes bacteria 99%<sup>\*4</sup>



# Other Features



## Quick Cooling

When you want to cool items quicker and more powerfully, switch the Quick Cooling mode ON. This cools items approx. 8%<sup>\*5</sup> faster.



## Easy Twist Ice Maker (Standard Series)

Just twist the lever of the ice maker, the ice can be made easily. When you want to make ice quickly, switch the Quick Freezing mode ON.

\*1 Moisture retention tested by Hitachi. The effect does not extend the best-before expiration dates and does not guarantee the indicated shelf life.  
 \*2 Tested by Hitachi. Comparison between Quick freezing mode ON and OFF.  
 \*3 Triple Power Filter that catches and removes 7 odour components (Tested by Hitachi. The type of odours : Methyl Mercaptan, Ammonia, Acetaldehyde, Trimethylamine, Propanal, Hexanal and Acetic Acid).  
 \*4 Thus also provides a sterilising effect. Combining the properties of Activated Carbon, Zeolite and Manganese Oxide (catalyst), the filter greatly reduces the percentage of odours present over time.  
 Testing organisation : Boken Quality Evaluation Institute. Testing method : Film adhesion method (JISZ2801). Name of processing component : Filter. Sterilisation method : Application of oxidation catalyst to filter. Subject : Bacteria trapped in filter. Test results : 99% sterilised after 24 hours, achieved using the filter alone. No effect on the environment and food inside the refrigerator.  
 \*5 Tested by Hitachi. Comparison between Quick Cooling mode ON and OFF.



\*Image of 3 Door Deluxe Series.

## Elegant Interior Design

The interior space of the side by side refrigerator are meticulously designed for easy and convenience. Comes with an energy saving LED light.



## Easily Store your Food in Drawers (Standard Series)

The drawers provide a continent space to store find the items at once glance.

# Glass Design

Add a touch of elegance to your kitchen with the new full glass door design.



## Mirror

Add a statement masterpiece to your kitchen with our Mirror design.



## Glass Black

Resplendent sleekness and sophistication with our Glass Black design.



## Matte Glass White

Accentuate the glamor in your kitchen with our chic and stylish Matte Glass White design.



## Glass Silver

Modern and contemporary accents with our Glass Silver design.



## Grande

R-M700VAG9MSX  
Net 569L

**Dimensions (mm)**

1795	50	1845	50	50	1215
		1100	720	920	370

□: Space required for ventilation.

**Refrigerator Compartment**

- Vacuum Compartment
- Bottle and Wine Shelf
- Quick Cooling
- Tempered Glass Shelves
- LED Light

**Freezer Compartment**

- Automatic Ice Maker
- Quick Freezing
- Tempered Glass Shelves
- LED Light

**Vegetable Compartment**

- Separate Veg. Compartment
- LED Light

**General Features**

- Inverter Control
- Dual Fan Cooling
- Dual Sensing Control (with Eco Thermo-Sensor)
- Tank Type Ice & Water Dispenser
- Auto Door
- Eco Monitoring Sensor
- Touch Screen Controller
- Vacuum Insulation Panel
- Powerful Deodorisation
- Mouldproof Door Gasket
- No Frost ● CFC-Free

## 3 Door Deluxe

R-MX700PMS0  
Net 569L

**Dimensions (mm)**

1795	50	1845	50	50	1215
		1100	720	920	370

□: Space required for ventilation.

**Refrigerator Compartment**

- Vacuum Compartment
- Quick Cooling
- Tempered Glass Shelves
- LED Light

**Freezer Compartment**

- Automatic Ice Maker
- Quick Freezing
- Tempered Glass Shelves
- LED Light

**Vegetable Compartment**

- Separate Veg. Compartment
- Moisture Guard Vegetable Compartment
- LED Light

**General Features**

- Inverter Control
- Dual Fan Cooling
- Dual Sensing Control (with Eco Thermo-Sensor)
- Tank Type Ice & Water Dispenser
- Touch Screen Controller
- Vacuum Insulation Panel
- Powerful Deodorisation
- Mouldproof Door Gasket
- No Frost ● CFC-Free

## 2 Door Deluxe

R-SX700PMS0  
Net 573L

**Dimensions (mm)**

1795	50	1845	50	50	1215
		1100	720	920	370

□: Space required for ventilation.

**Refrigerator Compartment**

- Quick Cooling
- Tempered Glass Shelves
- LED Light
- Vegetable Compartment

**Freezer Compartment**

- Automatic Ice Maker
- Quick Freezing
- Tempered Glass Shelves
- LED Light

**General Features**

- Inverter Control
- Dual Fan Cooling
- Dual Sensing Control (with Eco Thermo-Sensor)
- Tank Type Ice & Water Dispenser
- Touch Screen Controller
- Vacuum Insulation Panel
- Powerful Deodorisation
- Mouldproof Door Gasket
- No Frost ● CFC-Free

## 2 Door Standard

R-S700PMS0  
Net 595L

**Dimensions (mm)**

1795	50	1845	50	50	1215
		1100	720	920	370

□: Space required for ventilation.

**Refrigerator Compartment**

- Quick Cooling
- Tempered Glass Shelves
- LED Light
- Vegetable Compartment

**Freezer Compartment**

- Twist Ice Maker
- Quick Freezing
- Tempered Glass Shelves
- LED Light

**General Features**

- Inverter Control
- Dual Fan Cooling
- Dual Sensing Control (with Eco Thermo-Sensor)
- Vacuum Insulation Panel
- Powerful Deodorisation
- Mouldproof Door Gasket
- No Frost ● CFC-Free



***INVERTER***  
Dual Sensing Control

Energy Saving  
Surround Air Cooling

Quick Freezing  
Humidity Control

## Surround Air Cooling

The air circulation system blows less direct cold air on the food inside the whole fridge. No Frost cooling system optimizes the cold air distribution inside the refrigerator. Cool air comes from the sides of the sleek designed backwall and surrounds the shelves more equally. Surround Air Cooling keeps the food under a gentle air flow.



## Humidity Control

Adjust fruit or vegetable mode with a single slide of humidity control drawer. Enjoy keeping food fresh and nutritious.



\*This image is for illustrative purposes only.

## 3 Layer Storage Drawers

A sleek and space-saving design with three convenient and stackable compartments.



\*This image is for illustrative purposes only.

## Dual Sensing Control



Hitachi refrigerators have two Eco Thermo-Sensors, one in the freezer compartment and the other in the refrigerator compartment. The sensors detect any temperature changes separately to enable the ideal temperatures to be maintained in each of the compartments at all times.



\*This image is for illustrative purposes only.



## Mirror Touch Controller

Flat panel controls let you change the settings with a simple touch. And a wipe is all it takes to clean the surface.

## Quick Freezing

Enable Quick Freezing mode for fast, powerful freezing and automatic freezer temperature control. And automatically returns to normal freezer mode after 26 hours to preserve freshness and prevent nutrition loss.



\*This image is for illustrative purposes only.

## Efficient Inverter Compressor

### 10 years warranty

Hitachi refrigerators use an energy-efficient, electronically controlled inverter compressor. The compressor provides powerful cooling and lowers noise.

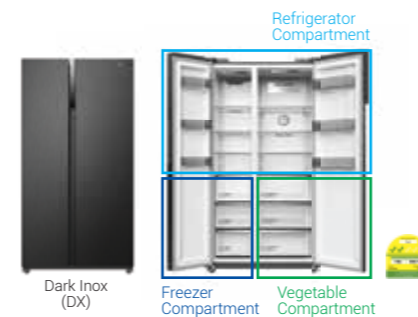


\*This image is for illustrative purposes only.

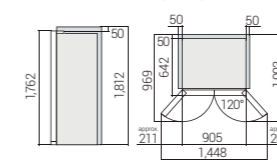
## Illuminated LED Lighting

LED in Refrigerator and Freezer Compartments. Energy saving anti-glare LED lights have been used not only in fresh food compartment but also freezer compartments.

2 Door  
HRSN9552DDXSG  
Net 525L



Dimensions (mm)



□ Space required for ventilation.

### Refrigerator Compartment

- Vegetable Compartment
- Tempered Glass Shelves
- LED Light





### Freezer Compartment

- Modular Twist Ice Maker
- Tempered Glass Shelves
- Quick Freezing
- LED Light


### General Features

- Inverter Compressor
- Surround Air Cooling
- Eco Thermo-Sensor
- Dual Sensing Control
- Energy Saving
- Humidity Control
- 3 Layer Storage Drawers
- Mirror Touch Controller
- Door Alarm
- HFC-Free ● CFC-Free
- No Frost

SPECIFICATIONS

		Grande Series	Deluxe Series		Standard Series	
		3-Door	3-Door	2-Door		
Model		R-M700VAG9MSX	R-MX700PMS0	R-SX700PMS0	R-S700PMS0	
Image						
Net Capacity (L*)	Total	569	569	573	595	
	Refrigerator	362	362	366	369	
	Freezer	207	207	207	226	
Storage Capacity (L*)	Total	547	539	569	595	
	Refrigerator	340	332	362	369	
	Freezer	207	207	207	226	
INVERTER x Dual Fan Cooling		•	•	•	•	
Refrigerator Compartment	Water Tank with Filter	• 3.2L	• 5L	• 5L	-	
	Bottle and Wine Shelf	•	•	•	•	
	Tempered Glass Shelves	•	•	•	•	
	Dairy Pocket	•	-	-	-	
	LED Light	•	•	•	•	
	Quick Cooling	•	•	•	•	
Vacuum Compartment	Vacuum Compartment	• 5.8L (+1°C)	• 10L (-1°C / +1°C)	-	-	
Vegetable Compartment	LED Light	•	-	-	-	
	Separate Vegetable Compartment	•	•	-	-	
	Moisture Guard Vegetable Compartment	-	•	-	-	
	Drawer	3	3	2	2	
Freezer Compartment	LED Light	•	•	-	-	
	Automatic Ice Maker	•	•	•	-	
	Twist Ice Maker	-	-	-	•	
	Quick Freezing	•	•	•	•	
	Tempered Glass Shelves	•	•	•	•	
	Drawer	3	3	3	2	
	LED Light	•	•	•	•	
General Features	Ice & Water Dispenser	•	•	•	-	
	VIP (Vacuum Insulation Panel)	•	•	•	•	
	Auto Door	•	-	-	-	
	Eco Monitoring Sensor	•	-	-	-	
	Touch Screen Controller	•	•	•	-	
	Dual Sensing Control (with Eco Thermo-Sensor)	•	•	•	•	
	Triple Power Filter	•	•	•	•	
	Door Alarm	•	•	•	•	
	Common Features	Refrigerant R-600a	•	•	•	•
		CFC-Free	•	•	•	•
		HFC-Free	•	•	•	•
No Frost		•	•	•	•	
Mouldproof Door Gasket		•	•	•	•	
Power Supply (V,Hz)		220-240, 50/60	220-240, 50/60	220-240, 50/60	220-240, 50/60	
Plug		BS 3PIN	BS 3PIN	BS 3PIN	BS 3PIN	
Dimension (mm)	Width	920	920	920	920	
	Height	1,795	1,795	1,795	1,795	
	Depth with Handle	720	720	720	720	
	Depth without Handle	720	720	720	720	
Colour		Mirror (MIR)	Matte Glass White (MGW)	Glass Black (GBK)	Glass Black (GBK) Glass Silver (GS)	

\*1 Based on IEC 62552-3:2015 Standard Volume  
\*2 Based on ISO 15502:2005 Standard Storage Volume

		2 Door
Model		HRSN9552DDXSG
Image		
Net Capacity (L*)	Total	525
	Freezer	192
	Refrigerator	333
Refrigerator Compartment	Metal Backwall	•
	Vegetable Compartment	•
	Tempered Glass Shelves	•
	LED Light	•
Freezer Compartment	Modular Twist Ice Tray	•
	Tempered Glass Shelves	•
	Quick Freezing	•
	LED Light	•
General Features	Inverter Compressor	•
	Surround Air Cooling	•
	Mirror Touch Controller	•
	Eco Thermo Sensor	•
	Dual Sensing Control	•
	Energy Saving	•
	Humidity Control	•
	3 Layer Storage Drawers	•
	Door Alarm	•
	Egg Tray	•
	Common Features	CFC Free
HFC Free		•
Refrigerant		R-600a
No Frost		•
Power Supply (V,Hz)		220-240, 50/60
Plug		BS 3PIN
Dimension (mm)	Width	912
	Height	1,762
	Depth (Without Handle)	642
Colour		Dark Inox (DX)

\*1 Based on IEC 62552-3:2015 Standard Volume